

12' X 24' RESIDENTIAL CUBE



Custom fit homes

The 12' x 24' Residential Cubes can be combined and configured to fit your location and lifestyle. The possibilities are nearly unlimited.

XTREME CUBES[™]
BY XTREME CUBES CORPORATION 

12' X 24' RESIDENTIAL CUBE

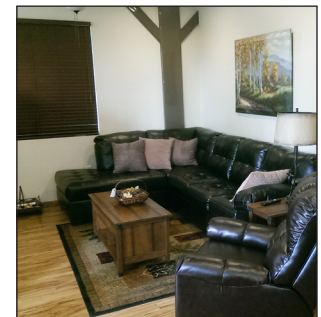
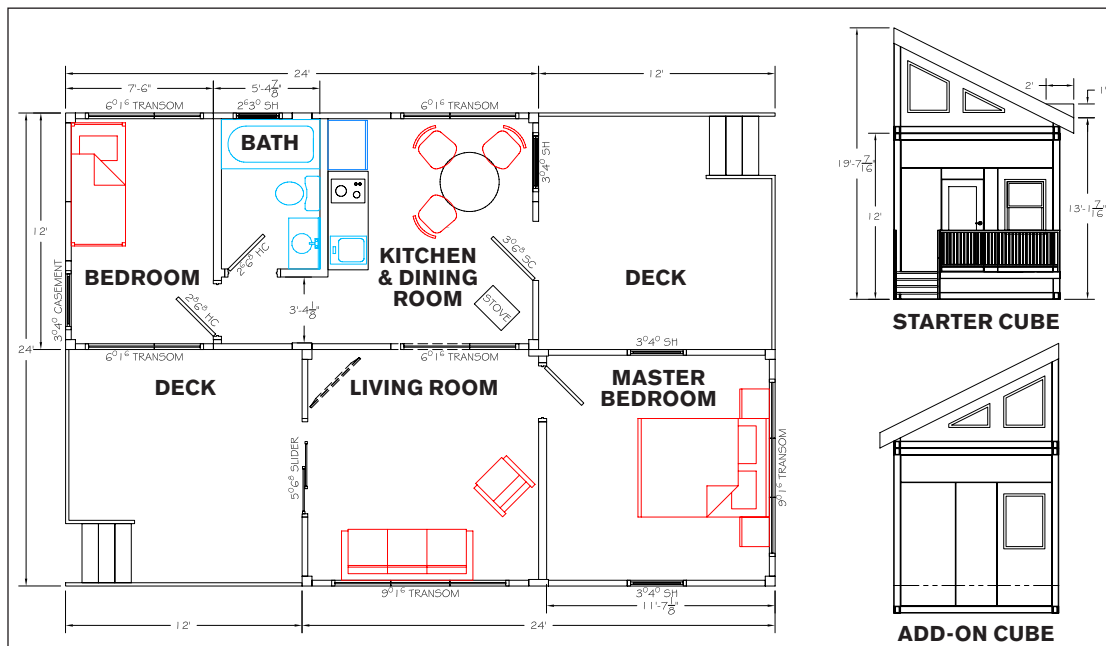
Contact Us
T: 800-497-1704
E: cuberfq@xmfg.com

STANDARD FEATURES

- 12' wide footprint allows for comfortable floor plans
- Variety of windows for natural light and fresh air
- High-quality interior finishes and fixtures
- Compatible with any utilities options
- Multiple exterior siding and loft options available
- Additional floor plans available upon request
- Virtually maintenance free
- Vinyl or steel log style siding (optional)
- Trex product decking (optional)
- Wood grain textured laminate flooring (optional)
- Wood burning fireplace
- Kitchen with appliances
- Bath, toilet with vanity and exhaust
- Murphy bed with storage (optional)

ADD-ON FEATURES

- Module offers more living and/or sleeping space
- Designed to quickly and easily integrate with existing Cube residence
- Large deck spaces available for enjoying the outdoors



ABOUT XTREME CUBES

- Welded structural steel tube frame enhances the Cube's overall strength and increases options for customization.
- The standard Cube height is 10'. Cube lengths and widths are available in increments of 8', 10' and 12'.
- Modular wall panels can be easily customized with doors, windows, and other options.
- Premium components are utilized inside and out for durability and long life.
- Each Cube is engineered to your specific location conditions to withstand snow load, wind load and seismic events.
- Utility connections are preconfigured for a convenient and simple installation.
- Installation is quick and simple. When delivered, Cubes can be set in position and typically are ready to use in one to two days.

XTREME CUBES™

www.xtremecubescorp.com

All Xtreme Cubes can be customized with a wide range of options. Speak to your Xtreme Cube representative for details and pricing.